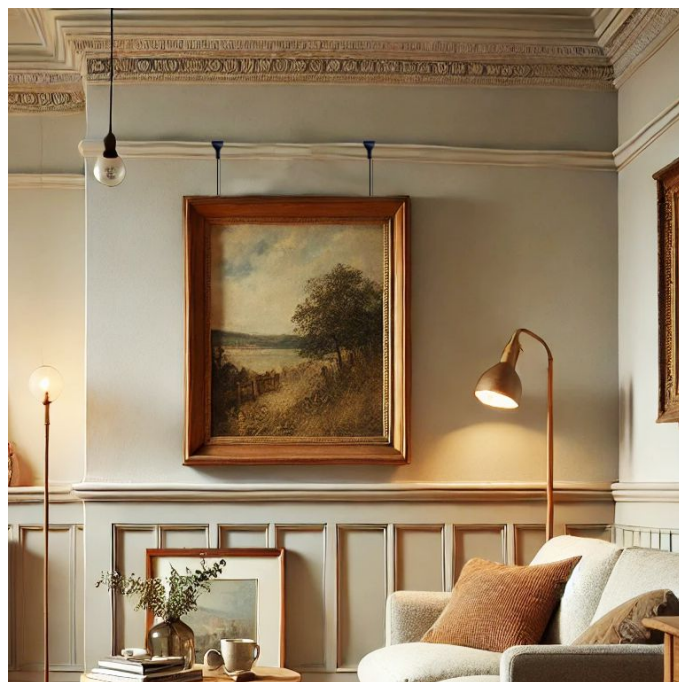




Moulding picture rail hanging kit

Short Description

- Moulding picture hanger with wire and easily adjustable bee-line hook
- Moulding hook suits traditional Victorian style moulded picture rails
- Picture rail hanging kit is available in silver or black, with 1m or 2m drop wire



Picture rail hanger for moulded picture rails

Moulding picture rail hanging kit combines traditional aesthetics with up to date design. Using slender but strong wire this wall picture hanger kit offers a discrete yet versatile solution to hanging pictures from a dado rail or moulded wood picture rail. Our picture rail hangers include Bee-Line hooks with inbuilt gripper technology to make precise height adjustment and levelling easy - while rated at an impressive 20kg loading per single wire.

What's in the kit?

Each set comprises a moulding hook to attach to typical picture rail mouldings found in older houses and many art galleries or art shops. A drop wire is included, either 1m long or 2m - which is especially useful for double-stacked picture or paintings. The kit is completed with an adjustable hook with internal gripper mechanism and safety catch to prevent accidental unhooking of picture frames. A single kit can be used for smaller artwork, but for larger paintings we would always recommend using two kits for extra stability.

- Silver finish is nickle plated, with alternative matte black option. In each case, the moulding hanger, wire and picture hook are colour coordinated.
- Finger-tip height adjustment of picture hooks is possible, thanks to the spring-loaded gripper release button at the cable entry point.
- Additional picture hooks can be ordered - see Recommended Accessories - when two or more pictures are to be hung one above the other on a single pair of wires.
- Excess wire can be coiled up and secured behind the painting or print. Wire can also be trimmed off using wire cutters if preferred.

Additional Information

More Information	<ul style="list-style-type: none">• Our moulding hangers fit securely on most traditional picture rails, but if in doubt we suggest you order a single kit initially to verify.• 20kg load rating applies to the components we supply. The strength of the picture rail is the responsibility of the installer or premises owner.• Drop wires are 1.5mm diameter 7x7 construction steel wire rope (not plastic coated).
Delivery and Returns	<ul style="list-style-type: none">• We offer a choice of delivery options tailored to the goods selected and your location, calculated for you automatically in the Checkout. When feasible, you will be offered options for Free, Economy or Next Day delivery.• Any product returned by the purchaser must be unused and in its original packaging, which should be unmarked. If goods are received damaged or faulty we will take care of the problem.• For detailed information about Delivery charges or Returns and refund policies, please click on the links below.
Include in Google Feed	Yes
Postable	No
Small parcel	No
Oversize	No

